

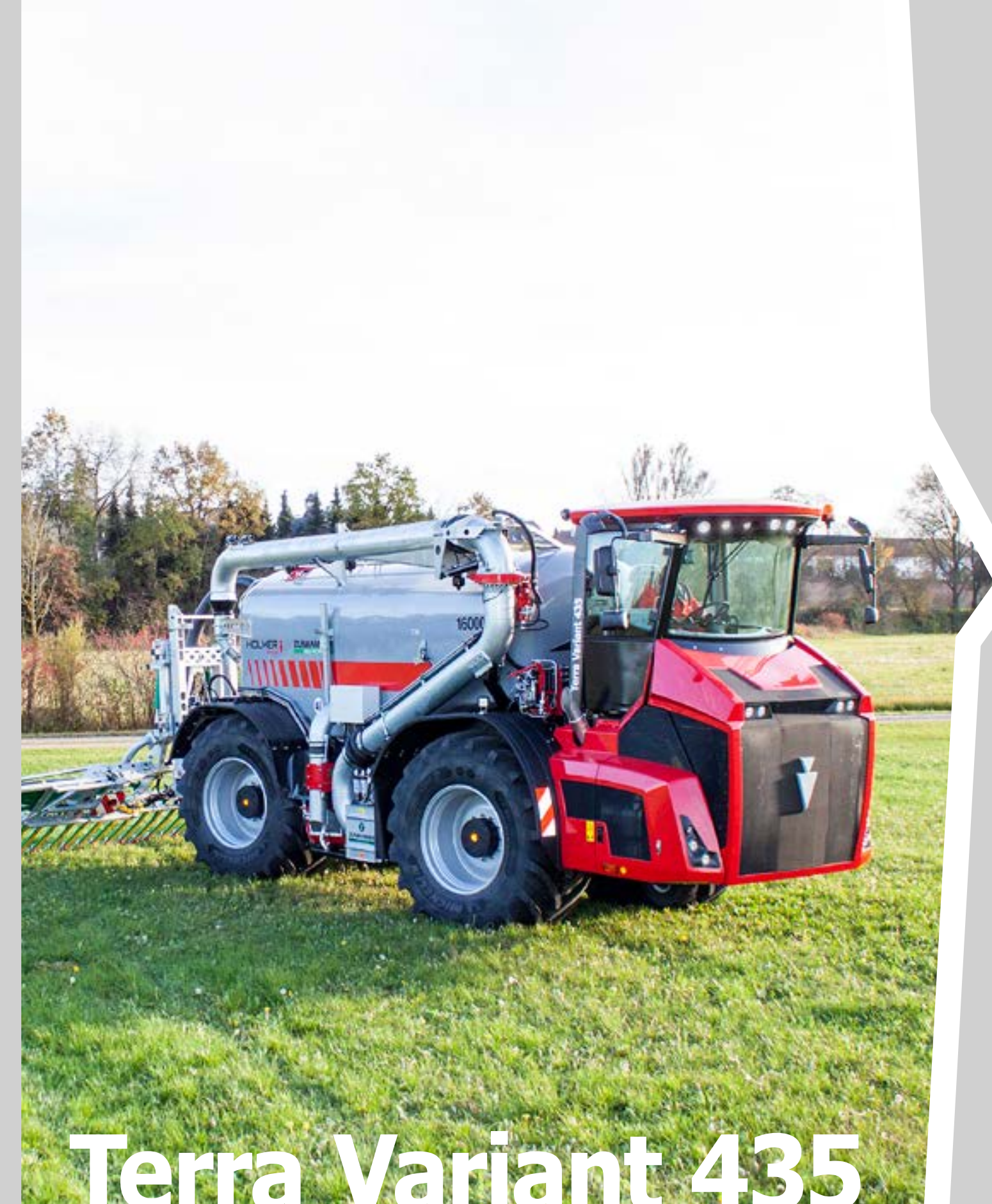
Technical data

Engine	Mercedes Benz OM 470 LA stage V
Cylinder	R-6
Piston displacement	10.7 l
Rated engine speed	1,700 rpm
Rated power at 1,700 rpm	320 kW/435 PS
max. torque at engine speed 1,200 rpm	2,100 Nm
Fuel tank capacity	Automatically reversible fan approx. 640 l
AdBlue tank capacity	approx. 95 l
Travel drive	
Hydrostatic travel drive	HOLMER DynaProtect stepless 0-40 km/h
Final speed	40 km/h at street drive
All-wheel drive	permanent
Axles	2 planetary steering axles incl. axle drive
Differential locks	Front & rear axle pneumatically switchable
Axle suspension with integrated slope compensators	Independently suspended front axle beam: Hydraulic suspension incl. level control Hydraulic support for side slope stability
Chassis	
Steering modes	All-wheel steering, four-wheel steering, crab steering
Tyres	
	Ultraflex tyre technology VF 900/60 R 38 CFO+ 193 A8 TL CerexBib2
	VF 580/85 R 42 CFO+ 183 A 8 TL CerexBib2 (outer width 2.55 m)
Brakes	
Service brake	Hydraulic disk brake
Parking brake	Spring-loaded multi disk brake
Hydraulic system	
Hydraulic tank capacity	160 l
Load-sensing max. delivery rate	357 l/min
Power hydraulics (Depending on equipment)	
Variable pump (slurry superstructure)	Danfoss H1 P 130
max. pressure	350 bar
max. delivery rate at 1,700 rpm	313 l/min
Rear hydraulics	
Category	KAT III
Lifting capacity	70 kN
Functions	Lifting, lowering, loading/unloading, hydraulically pivotable on both sides
Rear connectors	3 double-acting control units with floating position Time and volume control

External actuation	Rear button
Interfaces	ISOBUS Interfaces Signal socket with speed signal and linkage position
Power supply	24 V alternator 150 A 12 V alternator 70 A
Cabin	
	Panorama glazing and hinged window Hydrodynamic cabin suspension Automatic climate control Stereo CD radio with Bluetooth hands-free system and DAB+ Three-point mount control element Hydraulic pivot for servicing GRAMMER active seat
Intuitive operating concept HOLMER SmartDrive	12.1" touchscreen terminal HOLMER EasyTouch Multifunctional arm rest with joystick, jog-dial for shortcut keys Integrated operating of three-point mount functions Integration of the control of the slurry technique into the HOLMER EasyTouch
Illumination	
Headlights	2 x dipped-beam lights LED (1,950 lm) with angel eyes 2 x high-beam headlights LED (1,950 lm) with angel eyes
Work lights	4 x LED (3.400 lm) bonnet 6 x LED (2.500 lm) cabin roof, front, close-range 2 x LED (2.500 lm) cabin roof, rear 2 x LED (3.400 lm) cabin roof, front, distance-range 2 x LED (3.000 lm) mudguard, front
Central lubrication system	BEKA-MAX, electronically controlled intermittent lubrication and manual operation adjustable via HOLMER EasyTouch
Dimensions	
Total length with three-point mount	9.67 m
Width	3.00 m bei 900/60 R 38
Height	3.99 m
Ground clearance	4.26 m
Smallest turning radius	6.80 m
Optional equipment:	
	2 x LED (3.400 lm) cabin roof, sideways 2 x LED (3.000 lm) mudguard, rear Reverse camera for superstructure Compressed air brake for coupled devices HOLMER TerraControl headland management Narrow tyres for maize, track width 2.25 m VF 580/85 R 42 MICHELIN 183 A8 TL CerexBib2 Portable cool box

ZUNHAMMER Gülletechnik equipment	
Superstructure	Permanently mounted tank with 16 m ³ capacity Lightweight GFK tank with outlet sump 2 transverse baffle boards with overflow Visual and analogue fill-level display
Slurry computer controls	Slurry computer integrated into HOLMER EasyTouch terminal ISOBUS interface for task controller with job management Automatic speed regulation for suction Memory function for performance values Integrated operating concept with joystick
Suction system	Sideways docking system DN 250 Length 5.70 m reach 158° pivot to the side, hydraulically folding Integrated folding mechanism Automatic shut-off of the filling process Pneumatic valves for suction pipe emptying Oversuction procedure when stationary 800 rpm
Line system	Suction lines: NW 250 mm (10") Pressure lines: NW 200 mm (8") Feeder DN 250 (10") hydraulically controlled, lateral Three-way valve DN 200 (8") hydraulically controlled Suction connection DN 150 (on the right side) with shut-off valve
Illumination	4 x LED (2,500 lm) on light hoists, rear 1 x LED (2,500 lm) suction pipe
Camera	Reverse camera on superstructure
Slurry pump	Reversible rotary piston pump, emptying of tank via suction pipe possible
Type	VOGELSANG VX 186-368 QD Quick-Service design with HiFlo® pistons
Pump output	max. 9,000 l/min stepless regulated
Drive	Hydrostatic; hydraulic engine mounted directly to the pump
Cutting unit	
Type	Vogelsang RotaCut® MXL 10000
Flow-through volume	max. 10,000 l/min
Drive	hydraulic
Chopping technology	Interchangeable cutting blades made of cutlery steel ACC-Automatic Cut Control for consistent pressure from the cutting blade Adjustable pressure Auto-reverse function with automatic rotation direction change Partical separator with hydraulic rock-catcher feeder
Optional equipment	
	Suction connection NW 150 right side with shut-off valve Dosing unit for nitrification inhibitor VAN control for nutrient-controlled slurry injection

Subject to changes for the purpose of technical progress; approved by TÜV and the employer's liability insurance association; meets the CE requirements.



Terra Variant 435

 HOLMER Maschinenbau GmbH
Regensburger Straße 20
84069 Schierling/Eggmühl
11/2017
TEL.: +49 (0) 94 51/93 03-0
FAX: +49 (0) 94 51/93 03-31 32 00
info@holmer-maschinenbau.com
www.holmer-maschinenbau.com

HOLMER
exxact


11/2017

HOLMER
exxact



To live family.

The Terra Variant 435 is the „little brother“ of the Terra Variant 585. The extremely light slurry tanker is perfect for fertilising the crop in spring and to spread slurry close to the soil. The intuitive operating concept HOLMER SmartDrive integrates now the control of the slurry technique into the HOLMER EasyTouch screen.



To be ahead.

The little Terra Variant has a completely new hydrostatic travel drive with single-axle drives that allow stepless driving from 0-40 km/h – cardan shafts are not necessary. Because of the consequent HOLMER lightweight construction, the Terra Variant weighs only approx. 16.7 t including slurry technique.



Go your own way.

Terra Variant 435

DynaProtect

Only flying is more soil protecting.

The driver assistance system DynaProtect allows an individual, automatic regulation of the lead of both driving axles in every situation. Depending on the fall of ground and the crop cover, it guarantees optimum protection of crop and soil as well as directional stability in row crops. On the street is minimizes wear costs and diesel consumption.



The slurry trac for everyone.

